

## FURNACE QUICK CHECK MOTOR WILL NOT RUN

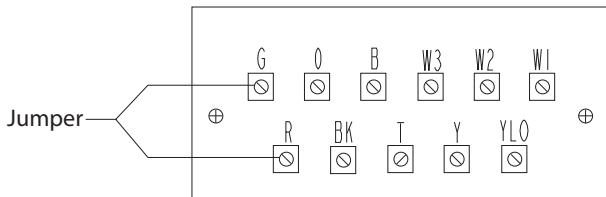
These service procedures will work on ECM-2™ motors and their motor control board and their 16 wire low voltage control cable.

- 1. Jumper 24 Volt A.C. “R” terminal to “G” terminal on the low voltage terminal board.**

**Does motor run?**

**No:** Go to step #2

**Yes:** Motor runs, check comfort control and comfort control wire.

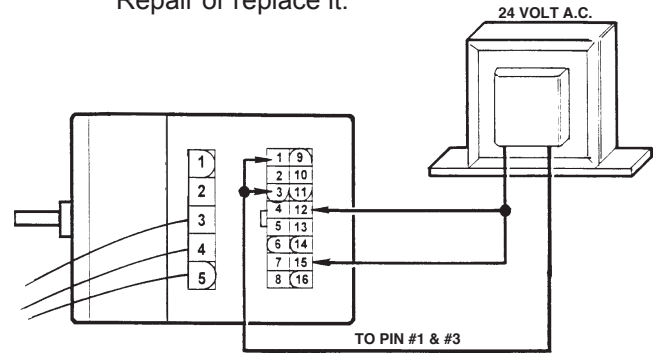


- 3. Unplug 16 wire low voltage harness from the motor. Jumper 24 volts A.C. to motor low voltage plug pins #12 and #15 and pins #1 and #3 which are common.**

**Does motor run?**

**No:** Got to step #4.

**Yes:** Fault is in the 16 wire low voltage harness. Repair or replace it.

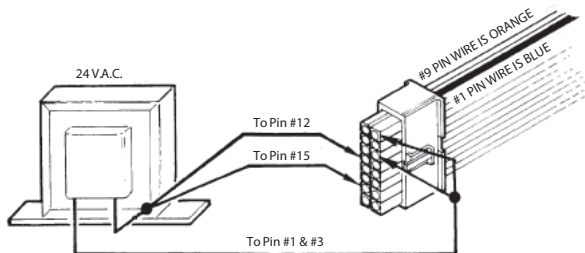


- 2. Unplug 16 wire low voltage harness from the interface board. Jumper 24 volts A.C. to pins #12, #15 and common pins #1 and #3.**

**Does the motor run?**

**No:** Go to step #3.

**Yes:** Replace the variable speed interface board on the furnace.



- 4. Is the line voltage to the motor high voltage power plug pin #4 and pin #5 correct?**

**No:** Correct line voltage fault.

**Yes:** Live voltage correct and motor will not run. Replace module.

